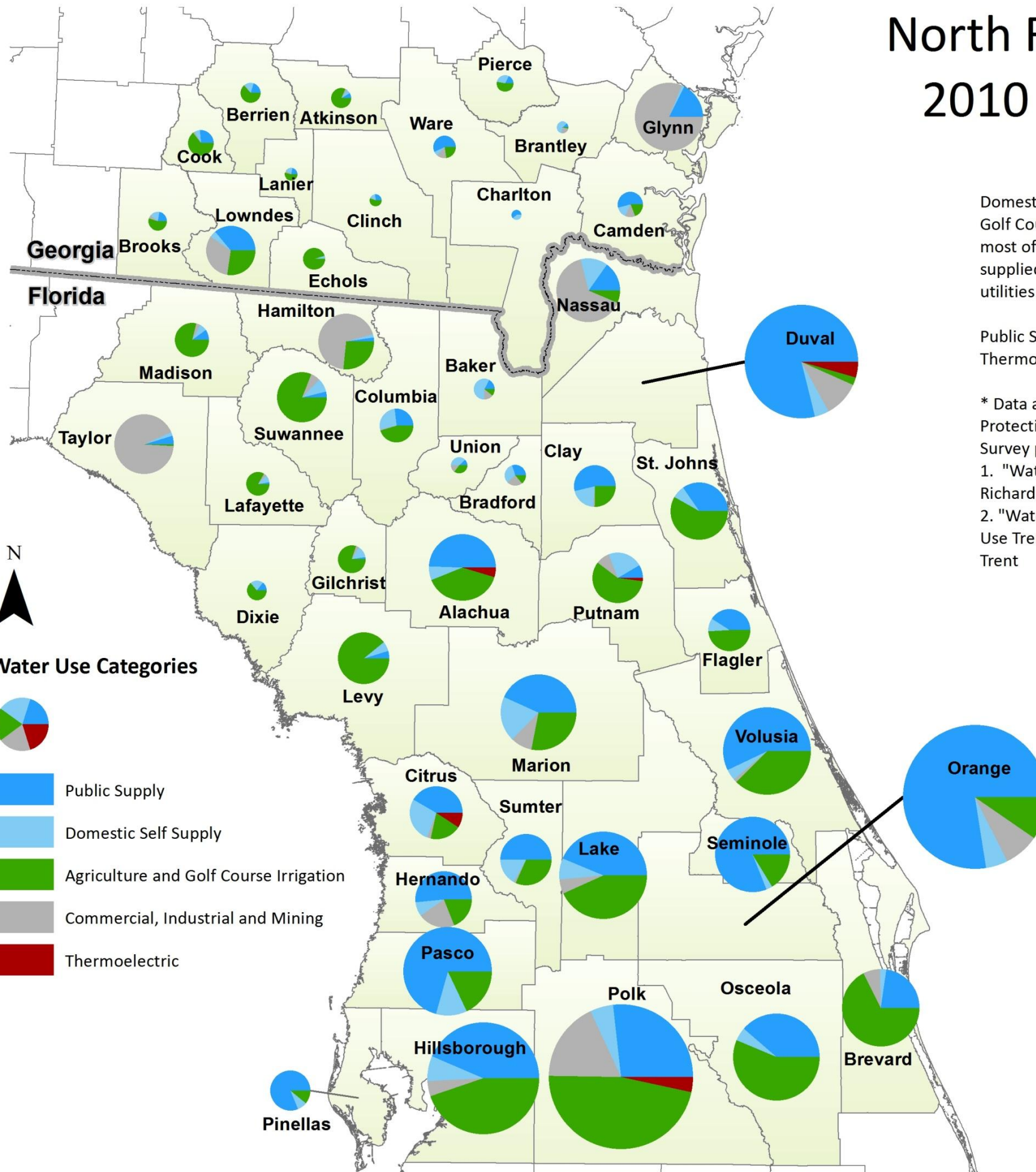


North Florida and South Georgia 2010 Groundwater Use Data *



Domestic Self Supply (residential wells) and Agriculture and Golf Course Irrigation categories are estimated values, as most of these uses are not metered. Public Supply is water supplied to residents, businesses, and institutions through utilities.

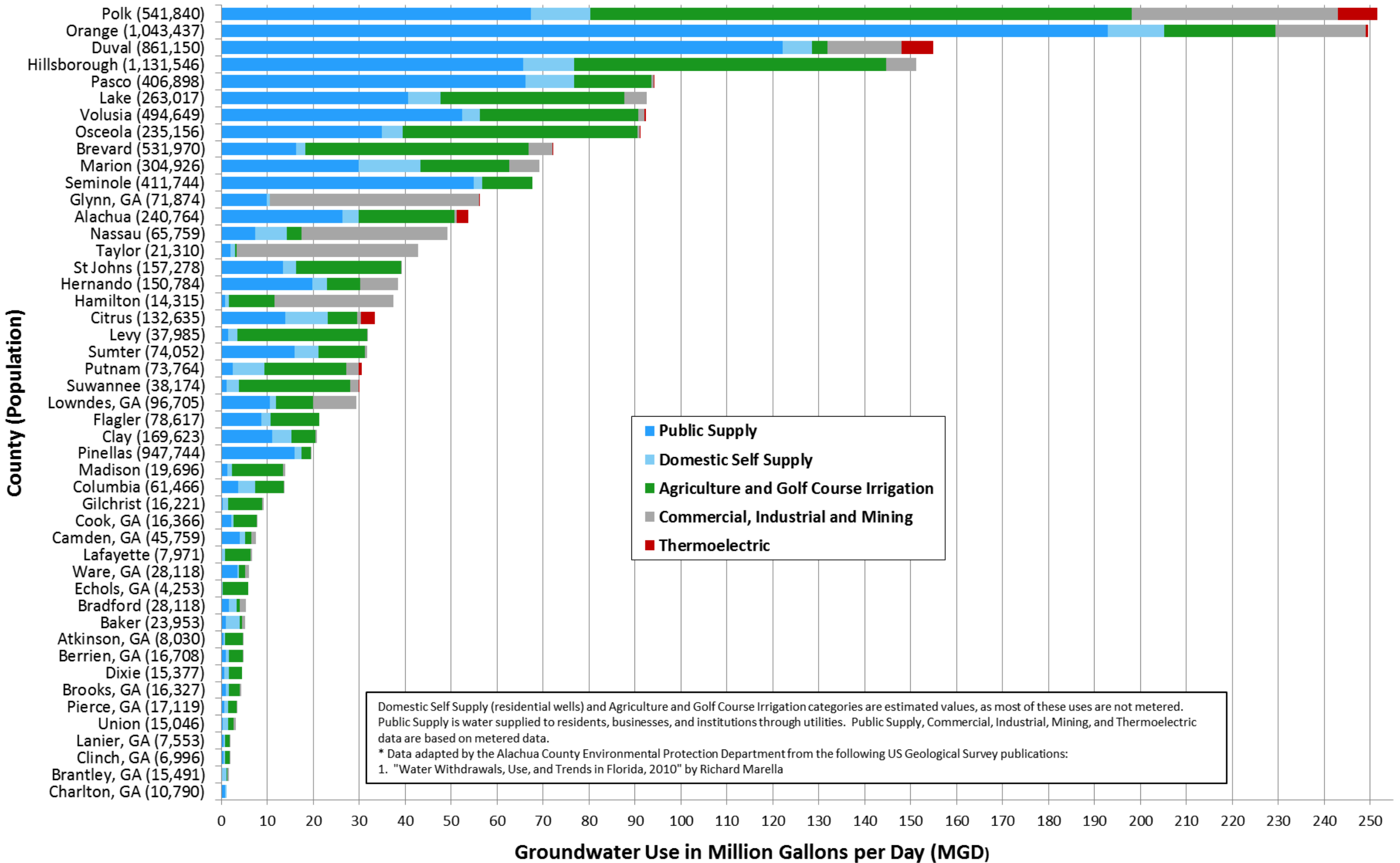
Public Supply, Commercial, Industrial, Mining, and Thermoelectric data are based on metered data.

* Data adapted by the Alachua County Environmental Protection Department from the following US Geological Survey publications:
 1. "Water Withdrawals, Use, and Trends in Florida, 2010" by Richard Marella
 2. "Water Use in Georgia by County for 2005; and Water-Use Trends, 1980–2005" by Julia L. Fanning and Victoria P. Trent

County	Total Groundwater Withdrawals (MGD)	Land Area (Mile ²)	Population
Polk	251.51	2,010	541,840
Orange	249.43	1,004	1,043,437
Duval	154.92	918	861,150
Hillsborough	151.25	1,266	1,131,546
Pasco	94.28	868	406,898
Lake	92.60	1,157	263,017
Volusia	92.31	1,433	494,649
Osceola	91.06	1,507	235,156
Brevard	72.04	1,557	531,970
Marion	69.18	1,663	304,926
Seminole	67.75	345	411,744
Glynn (GA)	56.17	583	71,874
Alachua	53.68	969	240,764
Nassau	49.28	726	65,759
Taylor	42.87	1,232	21,310
St. Johns	39.34	1,155	157,278
Hernando	38.40	589	150,784
Hamilton	37.41	519	14,315
Citrus	33.42	774	132,635
Levy	31.94	1,412	37,985
Sumter	31.65	580	74,052
Putnam	30.51	827	73,764
Suwannee	30.00	692	38,174
Lowndes (GA)	29.30	511	96,705
Flagler	21.26	571	78,617
Clay	20.72	644	169,623
Pinellas	19.59	536	947,744
Madison	13.93	716	19,696
Columbia	13.74	801	61,466
Gilchrist	9.22	356	16,221
Cook (GA)	7.91	233	16,366
Camden (GA)	7.57	783	45,759
Lafayette	6.62	548	7,971
Ware (GA)	6.08	907	34,492
Echols (GA)	5.78	421	4,253
Bradford	5.33	300	28,118
Baker	5.22	589	23,953
Atkinson (GA)	4.82	344	8,030
Berrien (GA)	4.80	458	16,708
Dixie	4.57	864	15,377
Brooks (GA)	4.26	498	16,327
Pierce (GA)	3.29	344	17,119
Union	3.12	250	15,046
Lanier (GA)	1.98	200	7,553
Clinch (GA)	1.80	824	6,996
Brantley (GA)	1.68	447	15,491
Charlton (GA)	1.21	783	10,790

MGD = million gallons per day

North Florida and South Georgia Groundwater Use Data*



Domestic Self Supply (residential wells) and Agriculture and Golf Course Irrigation categories are estimated values, as most of these uses are not metered. Public Supply is water supplied to residents, businesses, and institutions through utilities. Public Supply, Commercial, Industrial, Mining, and Thermoelectric data are based on metered data.
 * Data adapted by the Alachua County Environmental Protection Department from the following US Geological Survey publications:
 1. "Water Withdrawals, Use, and Trends in Florida, 2010" by Richard Marella